



Center *for*
Bioethics & Research

CBR

NEWSLETTER

June 2023 | Vol. 17 | Issue 2



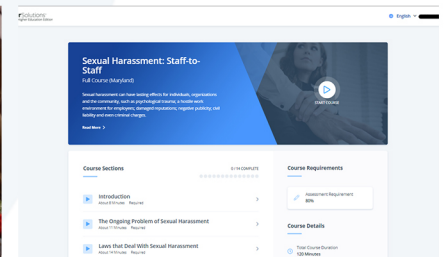
MSC PROGRAM

RESPONSIBLE CONDUCT OF RESEARCH

Enrol in an 18-month MSc in Bioethics Program on Responsible Conduct of Research which includes both online and offline components.

www.surerproject.net

JOIN NOW!



IN THIS EDITION

1.0 Masters' degree training programs in Bioethics

1.1 Online Responsible Conduct of Research (RCR), Research/Scientific Integrity (RSI), and Conflict of Interest (Col) training.

1.2 Online training in Diversity, Equity and Inclusion (DEI), Safe working and Sexual Harassment free Environment (SWSHE) in Nigeria.

1.3. M.Sc. Bioethics degree with concentration on Responsible Conduct of Research

1.4. RCR training in collaboration with BRANY-Collaborative Institutional Training Initiative (CITI), New York.

2.0 Training in Protection of Human Participants in Research

2.1 M.Sc. Bioethics at the University of Nigeria, Nsukka, Nigeria.

2.2 MPH with Bioethics concentration at University of Nigeria, Nsukka, Nigeria.

2.3 Onsite Local Health Research Ethics Committees and Health Researchers training.

2.4 Human Subjects Protection training in collaboration with BRANY-Collaborative Institutional Training Initiative (CITI), New York.

3.0 The Bioethics Library of the Center for Bioethics and Research.

4.0 Appointments/Achievements

4.1 Achievements

5.0 CBR Programs and News

5.1 CBR e-Mentoring Program

5.2 Grand Rounds of the Center for Bioethics and Research (GR-CBR).

5.3 Fogarty International Center (FIC) Network Meeting.

6.0 Information on Job Opportunities

7.0 Closing Remarks



Training in Responsible Conduct of Research (RCR), Research/Scientific Integrity (RSI), and Conflicts of Interest (Col).

1.1 Online Responsible Conduct of Research (RCR), Research/Scientific Integrity (RSI), and Conflicts of Interest (Col) training.

Interested individuals can take CBR's free online RCR training in collaboration with CITI by following the instructions here - How to complete CITI courses – Scaling Up Research Ethics and Research Integrity (SURER) Project (sureproject.net).

Of course, you are welcome to choose any other course that you are interested in at the same time.

ment training – Center for Bioethics and Research (bioethicscenter.net) for more information. CBR is committed to being a leader in preventing and effectively educating individuals on sexual harassment and misconduct.



Capacity building for ethical and safe research environment

The SURER Project implements a multi-institutional collaboration to develop Responsible Conduct of Research (RCR), Research/Scientific Integrity (RSI), Conflicts of Interest (Col), Diversity, Equity, and Inclusion (DEI), Safe Working and Sexual Harassment free Environment (SWSHE) training programs for researchers in Nigeria. Graduates of the training program become Research Integrity Officers for their institutions and complete training practicum that lead to development of their Institutional Research Integrity Units (RIU).

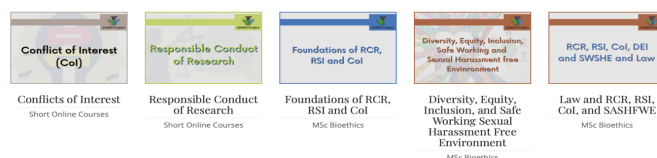


Figure 3: Online courses on Diversity, Equity, and Inclusion (DEI), Safe Working and Sexual Harassment free Environment (SWSHE) on the SURER Project site

Figure 2: Online courses on Diversity, Equity, and Inclusion (DEI), Safe Working and Sexual Harassment free Environment (SWSHE) on the SURER Project site

Question 3

Responsible Conduct of Research

If you are seeking training in Responsible Conduct of Research, choose from the following:

- Conflicts of Interest
- Responsible Conduct of Biomedical Research
- RCR Facilitators Guide Course
- Not at this time

1.2 Online training in Diversity, Equity, and Inclusion (DEI), Safe Working and Sexual Harassment free Environment (SWSHE) in Nigeria.

CBR has launched new courses on 'Safe Working Environment and Sexual Harassment free Environment' as part of our programs for building capacity of biomedical researchers in Nigeria. The main objective of the course is to educate, inform, protect, empower, and support the research community in confronting all forms of sexual misconduct and harassment in the workplace.

Sexual harassment undermines the integrity of working relationships and interferes with the right of individuals to work and learn in an environment free from harassment. Please visit Sexual harass-

1.3 M.Sc. Bioethics degree with concentration on Responsible Conduct of Research..

The Center for Bioethics and Research (CBR) Nigeria in collaboration with the new Department of Bioethics and Medical Humanities (DBMH) University of Ibadan and the Postgraduate College of the University of Ibadan is admitting candidates for the MSc. Bioethics training at the University of Ibadan. Interested individuals must be nominated and supported by their institutions.

The second set of candidates that were nominated by their institutions for the program have been shortlisted for admission by the postgraduate college of the University of Ibadan. Graduates of the MSc Bioethics program would return to their institutions after completing their coursework and final research project to establish or revive Research Management Offices (RMO) in their institutions where they are expected to serve as Research Integrity Officers (RIO).

Institutions in Nigeria that are interested in training Research Integrity Officers and establishing Re-

search Integrity Units should contact the Administrator, Center for Bioethics and Research (admin@bioethicscenter.net) for more information. You can also visit the project website at <https://surerproject.net> to know more about Surer project.

1.4 RCR training in collaboration with BRANY-Collaborative Institutional Training Initiative (CITI), New York.

Some 245 trainees completed online Responsible Conduct of Research (RCR) training through our collaboration with CITI.

SURER Project
Scaling Up Research Ethics
and Research Integrity

CITI COURSES
**RESPONSIBLE CONDUCT
OF RESEARCH**

Complete Short Online
Certificate Courses in Responsible
Conduct of Research

(Features: online modules,
and quizzes)

www.surerproject.net

ENROL NOW!

Training in Protection of Human Participants in Research

2.1 M.Sc. Bioethics at the University of Nigeria, Nsukka, Nigeria.

The ENRICH Program at the University of Nigeria (UNN) Enugu has admitted the 3rd set of candidates for the MSc. Bioethics program in the institution. A total of 7 candidates from diverse backgrounds were admitted for the program. An orientation ceremony was organized by the ENRICH program faculty to prepare the candidates for the learning environment and provide information on what they are expected to do.

The orientation ceremony marked the official resumption of the candidates as students at the University of Nigeria. The MSc. Bioethics students are fully sponsored by a training grant titled 'Eastern Nigeria Research Ethics Training (ENRICH) Program' funded by the National Institutes of Health (NIH) with support from the Center for Bioethics and Research (CBR) Nigeria. Throughout the duration of their program the students will be provided with textbooks, laptops, tuition fees, and other learning materials to make their program as seamless as possible.



Figure 3 Prof. E.R Ezeome addressing the students during the orientation program.

The ENRICH Program engages US and Nigerian faculty to support the development of robust research ethics capacity in Eastern Nigeria. The program faculty are principally implementers of research ethics education programs and research ethics researchers in the US and sub-Saharan Africa. Some of these faculty mentor and supervise the projects of ENRICH trainees in addition to UNN Program faculty and mentors.

The ENRICH Program also consists of a health research ethics committee (HREC) Working Group (HWG) which consists of UNN ENRICH faculty that ensures HRECs receive on-site (or virtual) training for all members to enable NHREC registration or renewal of their registration.

The duration of the MSc. Bioethics program at the University of is 18 months during which students are trained to become competent Bioethicists using learning mechanisms such as seminars, classroom discussions, research, grand rounds, workshops and many more.

The Director of the Bioethics Unit Institute of Public Health UNN, Prof. E.R. Ezeome congratulated the students on their admission into the program.

2.2 MPH with Bioethics concentration at University of Nigeria, Nsukka, Nigeria.

The University of Maryland School of Medicine and CBR are continuing to work with the Department of Community Medicine, University of Nigeria, Nsukka (UNN) to implement the Masters in Public Health (MPH) with Bioethics concentration program. The second cohort of trainees on the program are working on their final dissertations.

There are 4 students in the MPH with Bioethics concentration program, and they will complete the program at the end of the current academic session. A new set of students are expected to resume on the program later this year.

Training in Protection of Human Participants in Research

2.3 Onsite Local Health Research Ethics Committees and Health Researchers training.

The following onsite trainings were facilitated by CBR from Jan. 2023 to March 2023 (Table 2).

Institution	Date	Attendance	Participants	Training type
The University of Ibadan/University College Hospital (UI/UCH) HREC.	4th – 5th July	17	Members of Health Research Ethics Committee.	Modern Research Ethics.

These trainings are part of the requirements by the National Health Research Ethics Committee (NHREC) for members of an Ethics Committee and the registration of newly inaugurated Ethics Committees.

2.4 Human Subjects Protection training in collaboration with BRANY-Collaborative Institutional Training Initiative (CITI), New York.

As part of our partnership with the Biomedical Research Alliance of New York (BRANY)'s CITI program, we provided 851 online CITI trainings in Informed Consent, Responsible Conduct of Research, and a specialised module on the Nigerian National Code for Health Research Ethics from the 31st of March 2023 to 30th of June 2023. We have redesigned the curriculum page of the CBR-CITI page to make it easy for trainees to find courses that they are interested. Trainees can also quickly find other courses that may be of interest.

Question 1

NIGERIAN NATIONAL CODE FOR HEALTH RESEARCH ETHICS

Are seeking ethical approval to conduct research in Nigeria, if yes, you must complete the NIGERIAN NATIONAL CODE FOR HEALTH RESEARCH ETHICS Module

Yes
 No

Question 3

Responsible Conduct of Research

If you are seeking training in Responsible Conduct of Research, choose from the following:

Conflicts of Interest
 Responsible Conduct of Biomedical Research
 RCR Facilitators Guide Course
 Not at this time

Question 6

Healthcare or Public Health Ethics

If you are seeking training in Protection of Human Participants in Research, choose from the following:

Public Health Research
 Healthcare Ethics Committee (HEC)
 Not at this time.

Question 2

Protection of Human Participants in Research

If you are seeking training in Protection of Human Participants in Research, choose from the following:

Group 1 - Investigators: **Biomedical Investigators**
 Group 2 - Investigators: **Social and Behavioral Investigators**
 Group 3 - IRB members: **IRB members**
 Group 4 - Students: **Social Sciences Students**
 Group 5 - Students: **Biomedical Students**
 CITI Course in Good Clinical Practice (GCP): This 12 module course in GCP/ICH-E6 is an excellent foundation for investigators and staff conducting human subjects research according to Good Clinical Practice standards. The course will require 3-4 hrs to complete all modules and quizzes. The CITI "Basic" Course in The Protection of Human Subjects should be completed before attempting this GCP course.
 IRB Reference Resource: All CITI modules are available for ongoing use and reference when you join this Learner Group. If you are required to complete the CITI modules as a prerequisite for conducting human subjects research, you should enroll in a Learner Group listed above and complete all requirements. If you enroll in this group you will be required to complete ALL CITI modules. You may change your Learner Group status to "IRB Reference Resource" later to access review any of the CITI modules.
 IRB Chairs
 IRB Administration
 Institutional/Signatory Official
 Revised Common Rule
 Good Laboratory Practice (GLP)
 Basic Biosafety Training
 Biosafety Retraining
 Animal Biosafety
 Technology Transfer
 None

Question 4

Ethical Aspects of Data Science Health Research

If you are seeking training in Ethical aspects of Data Science Health Research, choose from the following:

IPS for Clinicians
 IPS for Researchers
 IPS for Students and Instructors
 IPS for Fundraisers
 IPS for Marketers
 GDPR for Research and Higher Ed
 Technology, Ethics, and Regulations
 Technology Transfer
 Not at this time

Question 7

Webinars

Please choose the Webinars you would like to review:

Ethics & Policy Issues in CRISPR Gene Editing New Content
 The Challenge of Medicare Advantage Plans and Local Coverage Determinations
 GDPR & Human Subject Research in the U.S.
 FERPA: A Quick Review of the Law for Researchers and IRBs
 Preparing for Single IRB (sIRB) under the Common Rule
 Building a ClinicalTrials.gov Compliance Program - Tips for Investigators and Institutions
 Transitioning Research to the Revised Common Rule: The What, How, and Why
 Revised Common Rule: Overview of Revisions
 Revised Common Rule: Revisions to Definitions
 Revised Common Rule: Revisions to Informed Consent
 Running a Virtual IRB Meeting
 Medical Marijuana: A Budding Field of Research
 Understanding Consent Requirements and "Key Information" Under the Revised Rule
 Artificial Intelligence (AI) and Human Subject Protections
 Social Media and Research Recruiting
 Importance of Peer Review and Data Validation in Research
 COVID-19: Supporting Ethical Care and Responding to Workforce Concerns in a Public Health Emergency
 "Nuts & Bolts" of Running a Virtual IRB Meeting
 COVID-19 and Human Research Protection Programs
 FERPA and Online Learning in the Time of COVID-19
 International Students in Focus at U.S. Higher Education Institutions (HEIs)
 Informed Consent: A Focus on the Process
 Informed Consent and Research with Wearable Tech
 Health Disparities: Promoting Equity and Diversity in Clinical Research

Question 5

General Research Capacity Development

If you are seeking general research capacity development training, choose from the following:

Clinical Research Coordinator (CRC)
 Essentials of Research Administration
 Essentials of Grant Proposal Development (EGPD)
 Research Study Design (RSD)
 Becoming an Effective Leader
 Navigating Online and Hybrid Teaching
 Observational Research Protocols: An Introduction
 Essentials of Statistical Analysis
 Not at this time.

Figure 5: Choice of online trainings available through the CITI-CBR website.

The Bioethics Library of the Center for Bioethics and Research.

The Center for Bioethics and Research (CBR) Bioethics Library is the most comprehensive repository bioethics books, journals, and other educational materials for students, faculty members, and researchers in Nigeria. It is available to all individuals interested in bioethics research and training. The library empowers students and faculty to discover and obtain information needed for their research in Protection of Human Participants in Research, RCR, RSI, DEI, Safe Working and Sexual Harassment free Environment. The librarian can be contacted, and the library's catalogue can be viewed through <http://library.bioethicscenter.net>

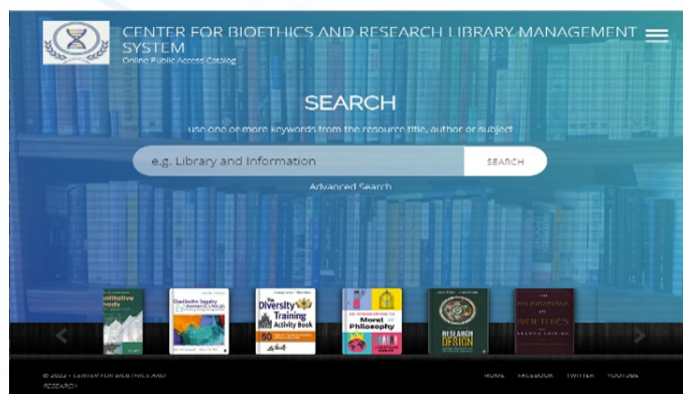
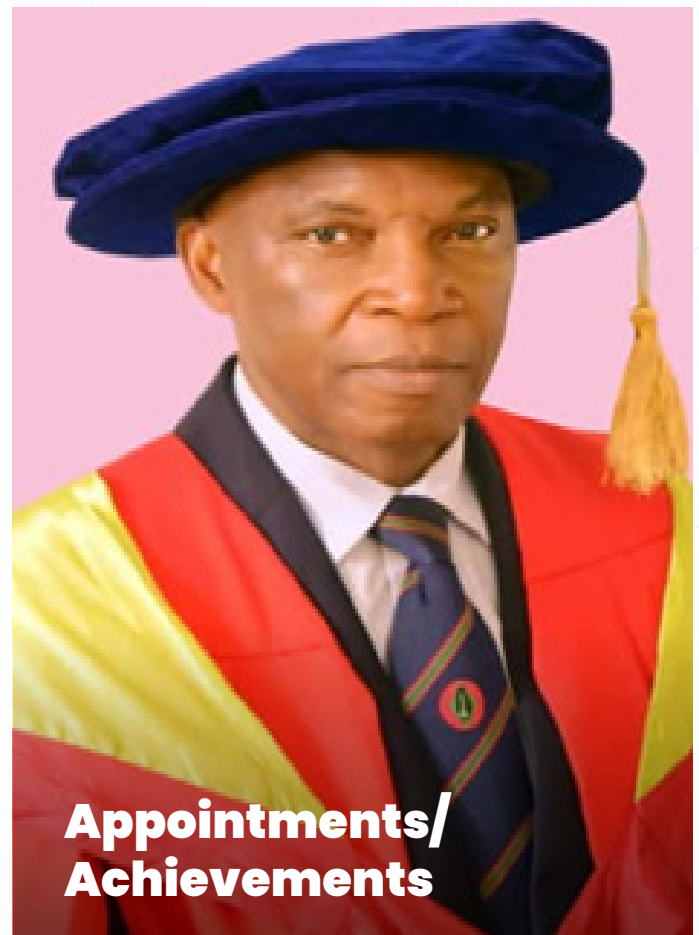


Figure 6: Bioethics library of the Center for Bioethics and Research, Ibadan, Nigeria



Appointments/ Achievements

5.1 Achievements

Professor Temidayo Ogundiran delivered the 526th inaugural lecture of the University of Ibadan. The lecture was titled **‘Search-light into the dark alley of Aberrants and Miscreants within the Commonwealth of Cells’**. Professor Ogundiran is the Academic Director of the Center for Bioethics and Research Nigeria. He is also the immediate past head of the Department of Bioethics and Medical Humanities, University of Ibadan. He is a founding member of the Center for Bioethics and Research (CBR). We are proud to be associated with him and we congratulate him on this achievement.

CBR Programs & News



6.2 Grand Rounds of the Center for Bioethics and Research (GR-CBR).

The Grand Rounds of the Center for Bioethics and Research is a new and innovative program designed to educate and enable development of bioethics research capacity in Nigeria.

The Grand Round holds monthly and feature presentations on Bioethics by faculty, local and international guest speakers. Trainees will also have an opportunity to present work-in-progress related to their research projects during these rounds.

Interested speakers should send an email to admin@bioethicscenter.net

6.1 CBR e-Mentoring Program

CBR launched an e-mentoring program for trainees and researchers in the field of health research ethics and health research in general. The program provides structured mentoring for in Research Ethics, Responsible Conduct of Research, and general research career development. The program was established to support the career development of local researchers, members of ethics committees and bioethicists. The e-mentoring program addresses the problem of lack of local mentoring resources by recruiting accomplished local and international researchers to mentor, provide career guidance and support for mentees. The mentoring process is proactive and managed by a program manager at CBR.

To support mentors and mentees, the program includes compulsory training courses in mentoring, behavioral nudges, and inducements to support establishment of successful mentoring relationships. The e-mentoring program is integrated into the postgraduate degree programs supported by the Center for Bioethics and Research (CBR) in different Nigerian universities but is also available to interested individuals/groups outside of these programs. Information and steps on how to enroll or get invited into the program, either as a mentor or as a mentee is available via the following link. Please visit - Mentoring Training – Center for Bioethics and Research (bioethicscenter.net) for more information.

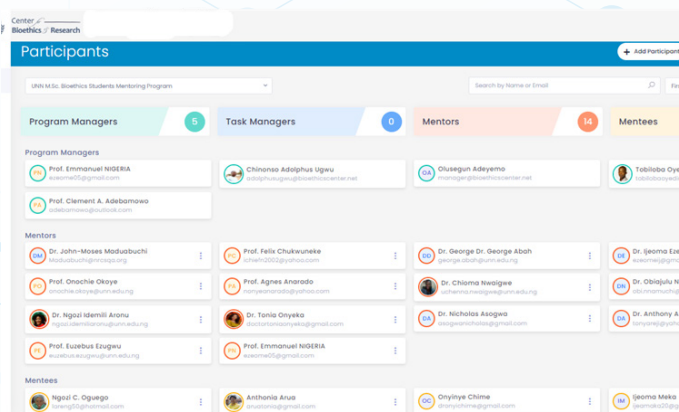


Figure 7 Screenshot of CBR mentoring complete platform.

CBR Programs & News

6.3 Fogarty International Center (FIC) Network Meeting

The United States National Institutes of Health's Fogarty International Center (FIC) supports education and research training to develop ethics expertise in low- and middle-income countries (LMIC). The programs complement other global health research and research training programs in the mission areas of the NIH Institutes and Centers. The annual network meeting for directors of FIC's Bioethics Training Programs 2023 was held in a hybrid format from May 14th to 16th 2023 at the Stone House, National Institutes of Health (NIH) Bethesda United States. The sessions included brief talks describing each program and highlighting an element in each training program that has worked exceptionally well that other programs can emulate.

Principal Investigators in attendance shared specific research training issues such as distance learning, trainee degree completion rates, mentorship, etc. There were also informational sessions by FIC grants management office, World Health Organization (WHO), NIH Department of Bioethics and other NIH partners. There were several breakout sessions where participants shared information and discussed possible collaborations.

Principal Investigator of the Eastern Nigeria Research Ethics (ENRICH) Program at the University of Nigeria, Enugu, Nigeria – Prof. E.R. Ezeome made a presentation on the achievements of the program and what has worked exceptionally well for the program.



Figure 8: From Left to Right: Dr. Peter Kilmarx – Acting Director of FIC, Prof. Usman Adamu – National Open University of Nigeria, Prof. Onochie Okoye- University of Nigeria, Prof. Adebayo Adejumo – University of Ibadan, Prof. Emmanuel Ezeome – University of Nigeria, Prof. Clement Adebamowo – University of Maryland, Prof. Christopher Agulanna – University of Ibadan, and Mr. Adesola Adeyemo - CBR at the FIC Network Meeting.

Prof. C.O. Agulanna, Head of Department of Bioethics and Medical Humanities, University of Ibadan, Ibadan, Nigeria also made a presentation on the achievements of Scaling Up Research and Research Integrity (SURER) Program of the University of Ibadan Nigeria.

The Center for Bioethics and Research (CBR) Nigeria works with both institutions to implement ENRICH and SURER Programs, so faculty members and some members of staff of CBR were also present at the meeting.

BeOnline Journal

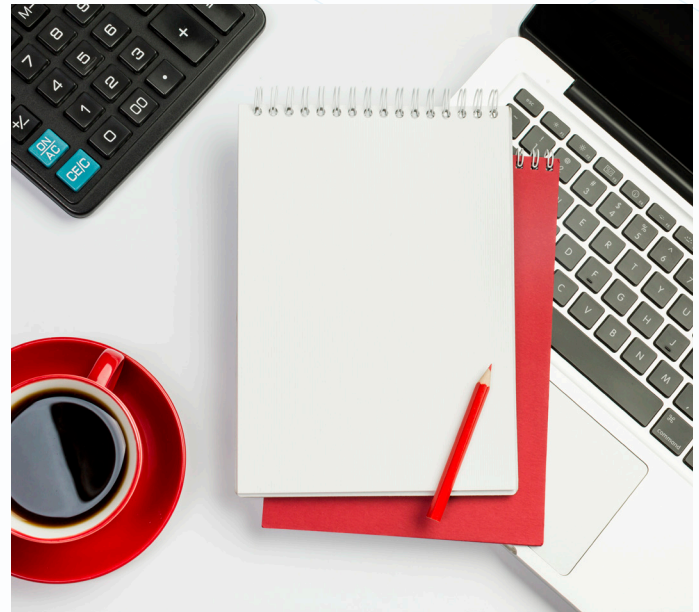
Accepting Manuscripts for Review and Publication

BeOnline, Journal - the Bioethics Online journal of the Center for Bioethics and Research is an open-access online journal that provides a platform for individuals to contribute to the global discourse on bioethics by adding the voice of Africans and research in Africa to the discussions about clinical and research ethics, primarily in Africa and in the world at large.

To better serve potential submitters, our journal now has a dedicated online home - BeOnline[®] Journal of the Center for Bioethics and Research (beonlinejournal.net). You can also submit by contacting the Editor in Chief directly by email at editorinchief@beonlinejournal.net.

We invite you to submit your work to our panel of experienced reviewers and publish in the BeOnline Journal. Rapid review and decision are guaranteed. We also provide text editing support to improve the quality of your papers. Let the world hear your view about research ethics.

For more information on how to submit a manuscript for review, please visit us at BeOnline[®] Journal of the Center for Bioethics and Research (beonlinejournal.net) or send an email to: editorinchief@beonlinejournal.net.



Information on Job Opportunities

The Center for Bioethics and Research widely disseminates information about job opportunities in research and bioethics on our social media pages and website for interested individuals. Please visit <https://bioethicscenter.net/jobs/> for more information.

Closing Remark

Thank you for taking your time to read this issue of the newsletter, your comments about the current issue, and ideas for the next issue are what will keep the Centre for Bioethics and Research Newsletter an interesting and lively newsletter.

Please send contributions and suggestions to admin@bioethicscenter.net

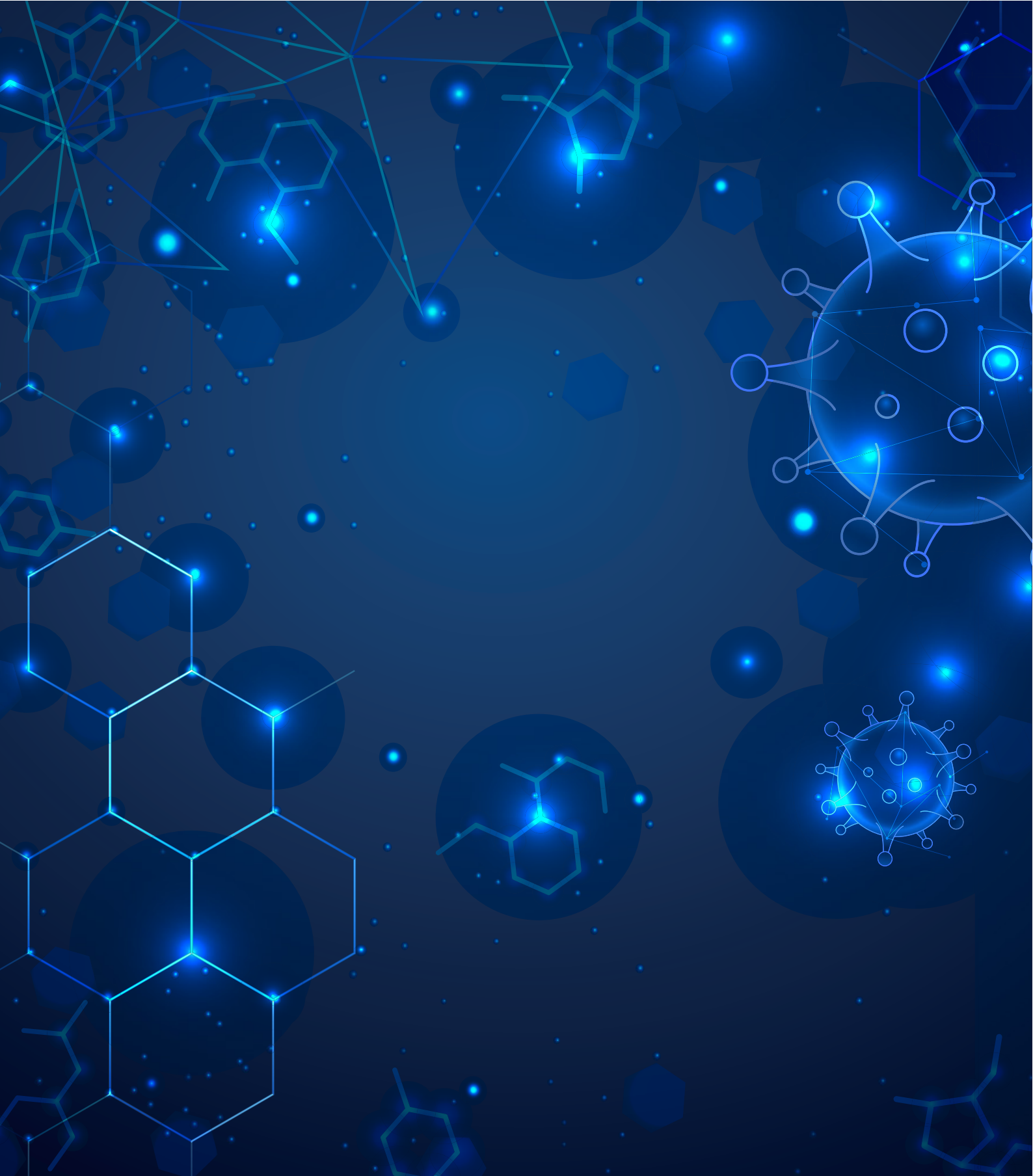
Check us on the web

www.bioethicscenter.net

Contact Address

102, Bashorun Road, Ashi-Bodija P.O. Box 29822,
Ibadan, Oyo State
Nigeria.

Email: admin@bioethicscenter.net



Contact Address

102, Bashorun Road, Ashi-Bodija P.O. Box 29822,
Ibadan, Oyo State, Nigeria.

Email: admin@bioethicscenter.net